



GOLD EXPLORATION IN CANADA



PROJECT

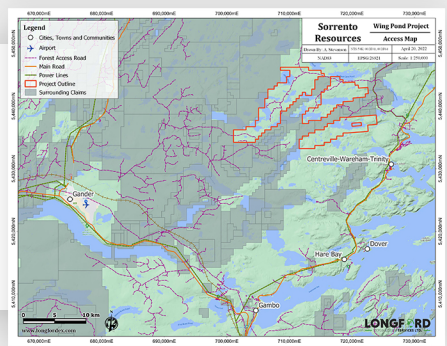
WING POND PROJECT

The Wing Pond Property is a camp-scale exploration opportunity in Eastern Newfoundland, located roughly 40 km east-northeast of Gander, Newfoundland, Canada. The Property consists of seven (7) mineral licenses comprising 462 Newfoundland and Labrador mineral claims and covers an area of approximately 11,550 hectares.



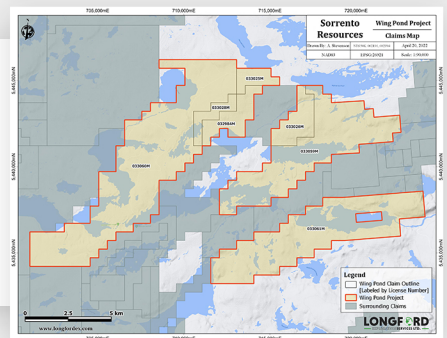
LOCATION

Newfoundland is rated 8th in the world as a mining jurisdiction by the Fraser Institute. It is a mining-friendly jurisdiction with very reliable transportation and excellent power infrastructure.



GEOLOGY

Well-known geology that is host to multiple epithermal systems that are yet to be explored. Gold-arsenic anomaly zones have been identified from soil sampling that relate to potential shear hosted gold mineralisation.



LEADERSHIP

BRAYDEN SUTTON
CEO, PRESIDENT &
DIRECTOR

T. JOSHUA TAYLOR
DIRECTOR

BRENT M. CLARK
DIRECTOR

SAMANTHA L. SHORTER
DIRECTOR

BOBBY S. DHALIWAL
CFO & CORPORATE SECRETARY